



Church of England Birmingham

# 2024 At a Glance



17,000

Lay People in Worshipping Communities

146

Parishes

43

Oversight Areas

6

Deaneries

1.6 million

Population of Diocese  
(across Birmingham, Solihull and some areas of Sandwell and Bromsgrove)



253 Volunteer Ministers

- 105 Licensed Readers
- 115 Clergy with Permission to Officiate (PTO)
- 28 Self-Supporting Ministers (SSM)\*
- 5 Locally Ordained Ministers

In addition, we have 93 Licensed Readers aged over 70

\*Self-supporting ministers including SSM curates



124 Parish Clergy

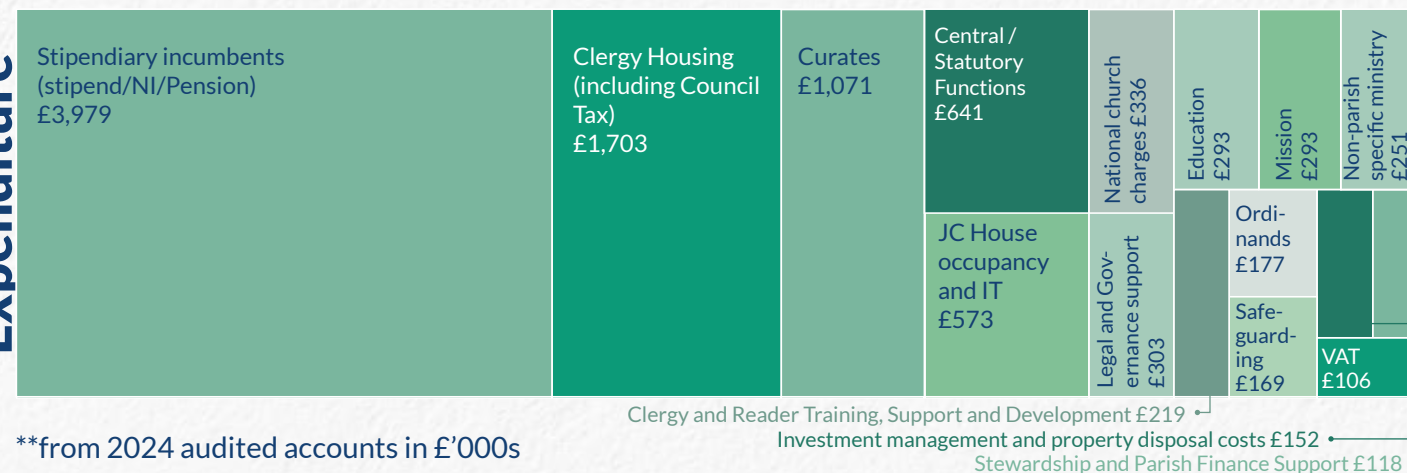
- 95 Incumbents
- 28 Curates
- 1 House for Duty

## Our Unrestricted Finances\*\*

Income

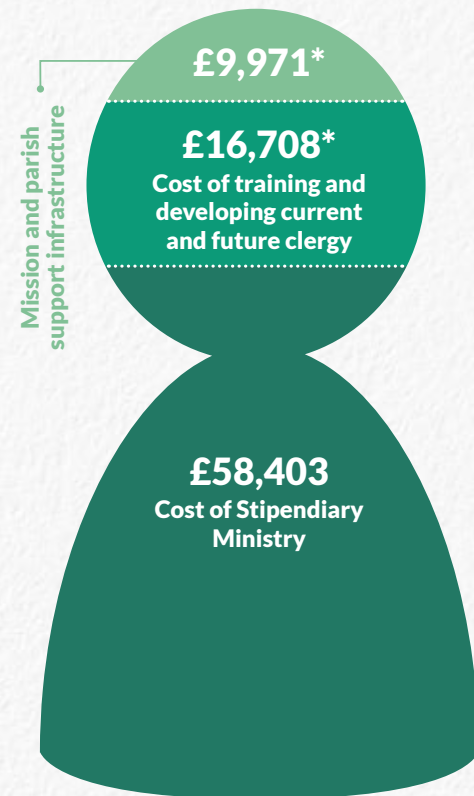


Expenditure



\*\*from 2024 audited accounts in £'000s

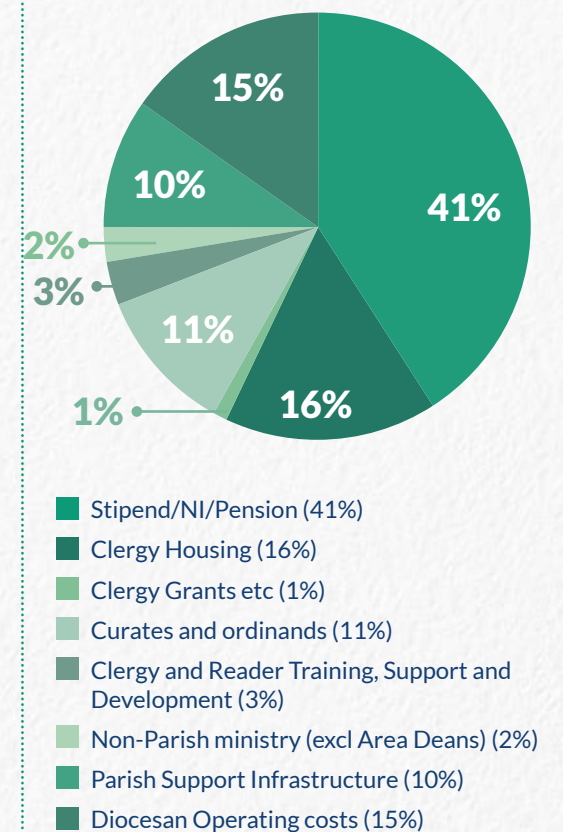
## 2025 Unrestricted Common Fund



Common Fund is the vital contribution from our parishes, forming our largest regular income source. It contributes to ministry costs, ministerial training, and parish support. As a diocese, we do not have sufficient other sources of income to cover the costs of our wider support infrastructure. Rooted in biblical generosity, Common Fund traditionally contributed 56% of our core income but has fallen below 50% since COVID-19. Our goal is to restore it to sustainable levels.

\*Total cost allocated per stipendiary priest

## 2025 Unrestricted (Core) Expenditure budget



## Projects Funded Through Restricted Grants in 2024

Funding of over £2.6 million from the national church, Oak Foundation and Heritage England enabled the following major projects in 2024

### Anglo-Catholic Mission

Supporting five Anglo-Catholic parishes to develop and grow missionally.

### Net Zero Carbon Initiatives

Plans developed and activity being supported in parishes and clergy housing.

### Safe Spaces Innovation

Working with Thrive to create safe spaces for young people.

### Children and Families Mission Enablers

A network of enablers across all deaneries, supporting strengthened youth and family ministry.

### People & Places

The continuation of our fundamental strategic structure and culture change programme. 2024 included the ongoing formation and embedding of our Oversight Areas, Oversight Ministers, Mission Planning and new leadership pathways.

### Social Housing

Beginning of a project funded by Oak Foundation to develop CofE Birmingham sites for social housing.

### Church Planting and Revitalisations

Pype Hayes, Shirley and Longbridge.

### Programme Management

Funding from the national church enables The Programme Management Team to support the delivery of our projects.

### St Michael's Handsworth

Funding from Historic England towards crucial major repairs.